

# Wirefree Magnetic Contact Detector

## Installation and Operating Instructions

These instructions should be read in conjunction with your System Installation and Operating Manual and be retained for future reference.

### DECLARATION

Friedland hereby declares that this wirefree Magnetic Contact Detector is in compliance with the essential requirements and other relevant provisions of the R&TTE directive (1999/5/EC).

### INTRODUCTION

This Magnetic Contact Detector is suitable for use with Friedland Wirefree Intruder Alarm systems operating at 868MHz only.

The Magnetic Contact Set comprises of two parts; a Detector and a Magnet. They are designed to be fitted to either doors or windows with the Magnet mounted on the opening part of the door/window and the Detector mounted to the frame. When the protected door or window is opened and the Magnet is moved away from the Detector an alarm will be triggered, (if the system/zone is armed).

The Magnetic Contact Detector has the facility to connect an additional wired Magnetic Contact. This must be of a normally closed contact type with the contact being opened in order to generate an alarm condition.

The Detector is powered by two CR2032 type Lithium cells which under normal conditions will have an expected life of approximately 1 year. Under normal battery conditions the LED on the Detector will not illuminate when the Detector is triggered, (unless the detector is in test mode). However, under low-battery conditions this LED will be illuminated for approximately 1 second when the detector is triggered. When this occurs the batteries should be replaced as soon as possible.

### POSITIONING THE MAGNETIC CONTACT DETECTOR

The Magnetic Contact Detector is suitable for mounting in dry interior locations only.

Decide which doors and windows are to be protected by fitting Magnetic Contact Detectors, (usually the front and back doors as a minimum will have Magnetic Contact Detectors fitted). However additional detectors may be fitted where required to other more vulnerable doors or windows, (e.g. garage, patio/conservatory doors etc).

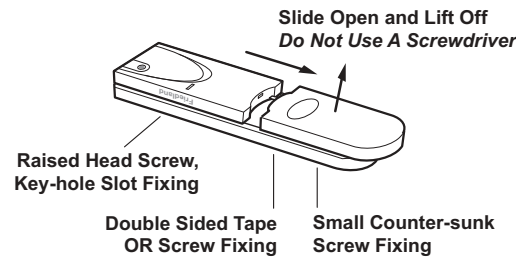
Ensure that the position selected for the Magnetic Contact Detector is within effective range of the Control Panel.

**Take care when fixing the Detector to a metal frame, or mounting within 1m of metalwork (i.e. radiators, water pipes, etc) as this could affect the radio range of the device.**

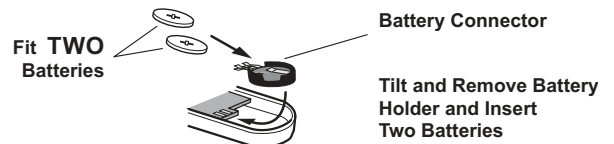
On uPVC frames etc, it may be necessary to space the magnet and detector away from the metal surface using a plastic or wooden spacer to achieve the necessary radio range.

### INSTALLING AND CONFIGURING THE MAGNETIC CONTACT DETECTOR

1. Remove the battery cover by sliding and lifting it off. (DO NOT use a screwdriver to lever it off).



2. Slide the **two** batteries supplied into the battery holder, ensuring that the + side is uppermost on each battery as it is installed.

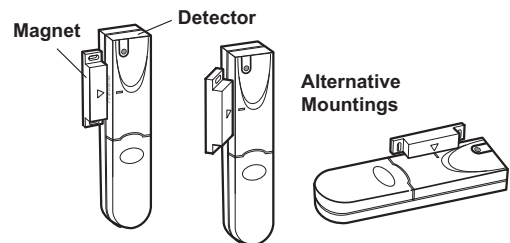


3. If necessary, refit the battery holder into the detector ensuring that the spring clip connectors slide onto either side of the circuit board.
4. The Detector and Magnet should be mounted together along the opening edge of the window/door opposite the hinges. Ensure that the parallel gap between the Magnet and Detector is less than 10mm and that the arrow on the magnet is aligned with the mark on the detector.

The Detector should be mounted on the fixed part of the frame and the magnet on the opening part.

The Detector and Magnet should be mounted using the double sided adhesive pads or screws provided.

**Note:** If mounting the device using the adhesive pads ensure that the mounting surfaces are clean and dry before mounting.



5. If fixing the detector with screws first remove the battery holder by carefully tilting up the end and pulling away from the printed circuit board (PCB).

The top of the Detector is secured by hanging the keyhole slot over the head of the 10mm pan head screw. The bottom of the Detector is secured using the 12mm counter-sunk head screw fitted within the battery compartment. Carefully drill out the centre of the fixing screw hole in the battery compartment using a 3mm drill. Fit the Magnet using the two 15mm fixing screws. Do not over tighten the screws as this may distort or damage the casing.

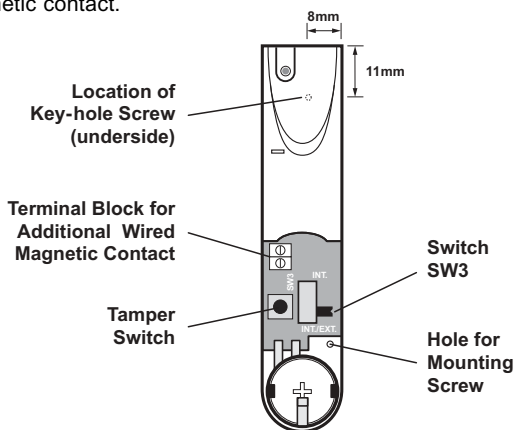
6. If an additional wired Magnetic Contact is required, this should be wired to the terminal block provided in the battery compartment. The wired contact should be connected using a maximum length of 1.5 metres of any of the following:

- 6 core alarm cable
- 2 core bell wire (6 x 0.2mm minimum)
- 2 core 24AWG wire

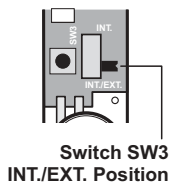
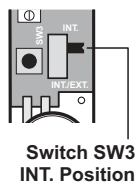
A cable entry cut-out is provided beside the terminal block in the battery cover.

If an additional wired Magnetic Contact is connected to the detector then set switch SW3 on the Circuit Board to the INT./Ext. position

7. Switch SW3 is used to enable/disable the internal/external wired magnetic contact.



Position of SW3	Function
INT.	Internal Contact ON
INT./EXT.	Internal and External Contacts ON



8. Set the magnetic contact detector by setting the position of the switch (SW3).

If setting to the INT. position, only the internal contact will be active. When two contacts are in use for internal and external connection simultaneously (INT./Ext. position), only one activation will be counted if one of the contacts is opened. If one contact is left open and the other closed contact is opened then an activation will be counted.

9. Refit the battery cover.

**IMPORTANT:** If no additional wired contacts are required, set SW3 to the INT. position for the Detector to operate correctly.

## LINKING THE MAGNETIC CONTACT DETECTOR TO THE ALARM SYSTEM

In order to communicate with the system, the ID code of the Detector needs to be learnt by the Control Panel when placed into Learn Mode (or for single zone systems, first place the Siren into Service Mode prior to Learn Mode).

Refer to the Installation and Operating manual for your system for adding additional detectors to your system.

## TESTING THE MAGNETIC CONTACT DETECTOR

1. Remove battery cover to activate the tamper switch.  
As the button is released the LED indicator will illuminate for approximately 1 second to show that the tamper switch has been triggered and a signal is being transmitted.
2. Open the door/window to remove the Magnet from the Detector.  
As the Magnet is moved away from the Detector the LED indicator will illuminate for approximately 1 second to show that the Detector has been triggered and a signal is being transmitted.  
**Note:** It does not matter if the LED indicator illuminates as the magnet is brought towards the detector.
3. Refit the battery cover.
4. Ensure that the system is switched back to Standby/Operating Mode.

It is recommended that the operation of the detector is also tested with the alarm in normal operating mode to ensure that the detector will successfully trigger a Full Alarm condition and that the Detector is operating on the correct zone (if installed on a multi zone alarm system (with Control Panels). Refer to your System Installation and Operating Manual.

**IMPORTANT:** With the battery cover fitted the LED indicator will not flash when the door/window is opened, (unless the battery is low).

## DISPOSAL

At the end of their useful life the packaging, batteries and product should be disposed of via a suitable Recycling Centre. Do not dispose of with your normal household waste. DO NOT BURN.



## GUARANTEE

Novar ED&S (A Honeywell Company) undertakes to replace or repair at its discretion goods (excluding non rechargeable batteries) should they become defective within 2 years solely as a result of faulty materials and workmanship. Understandably if the product has not been installed, operated or maintained or maintained in accordance with the instructions, has not been used appropriately or if any attempt has been made to rectify, dismantle or alter the product in any way the guarantee will be invalidated.

The guarantee states Novar ED&S entire liability. It does not extend to cover consequential loss or damage or installation costs arising from the defective product. This guarantee does not in any way affect the statutory or other rights of the consumer.

If an item develops a fault, the product must be returned to the point of sale with:

1. Proof of purchase.
2. A full description of the fault.
3. All relevant batteries (disconnected).

Friedland is a trade mark of Novar ED&S.

## HELPLINE

If you have any problems with your alarm, please call the Helpline on:

**0870 850 3015**

(Lines open 9.00am to 5.00pm, Monday to Friday.  
Calls charged at service providers national rate).



Friedland, Novar Electrical Devices and Systems Limited. (A Honeywell Company)

The Arnold Centre, Paycocke Road, Basildon, Essex SS14 3EA. UK

www.friedland.co.uk

51067PL Ed.1