

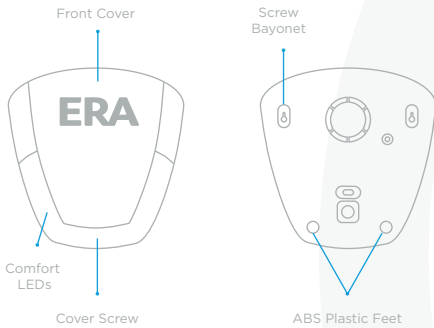
### BATTERY OPERATED REPLICA SIREN

Model: SALAPWHR5BU

#### 1. OVERVIEW

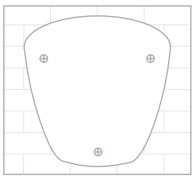
The ERA Protect Replica Siren is a visual deterrent, which includes flashing comfort lights to either; show potential intruders that there is likely to be a live alarm system protecting the property, or enhance the visibility of an existing live alarm system.

#### 2. GET TO KNOW YOUR PRODUCT



#### 3. WIRELESS OUTDOOR SIREN INSTALLATION

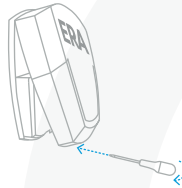
- Using the drilling template mark up the mounting holes required to be drilled.



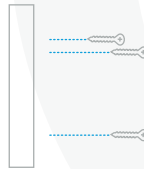
- Drill the marked holes where you will place your wall plugs.



- Remove the front cover.

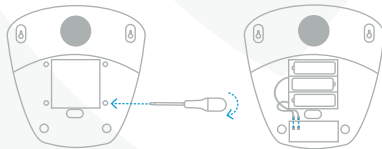


- Take the backplate of the Siren, three screws, wall plugs and a screwdriver to the location.
- Push the wall plugs into the holes and proceed to screw the backplate onto the wall using the screws provided.

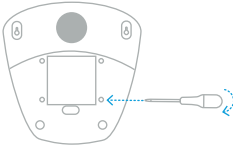


**Note:** Battery is required to be connected before use.

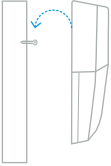
- Remove the battery cover and place 3 x AA batteries into the battery compartment



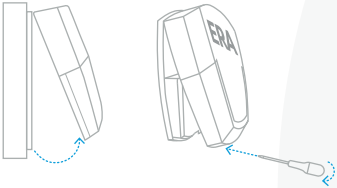
- Place the battery cover onto the backplate and screw it securely.



- Align the front cover to the backplate, hang and slide down.



- Screw the cover screw at the bottom of the Siren lens with a screwdriver to fix the cover to the backplate.



## 4. BATTERY REPLACEMENT

- Go to the location of the Siren and remove the cover screw using a screwdriver.
- Remove the front cover, then proceed to remove the battery cover.
- Remove the 3 x AA batteries from the battery compartment.
- Replace with new recommended batteries
- Apply the battery cover to the backplate and then replace the front cover back to the backplate.

## 5. SPECIFICATION

Battery:

Battery 3 x AA  
Alkaline 4.5V DC

Battery Life:

2 years

Housing Material:

ABS Plastic

Size (LxWxH):

250 x 242.7 x 64mm